



Overview of Sumter-Shaw AFB JLUS

What is the Sumter-Shaw AFB Joint Land Use Study?

The Sumter-Shaw Air Force Base (AFB) Joint Land Use Study (JLUS) is a cooperative planning effort conducted as a joint venture between Shaw AFB, including Poinsett Electronic Combat Range (ECR), the City of Sumter, Sumter County, and other affected stakeholders. The study is being administered by the Sumter City-County Planning Commission and co-funded through a grant from the Department of Defense (DOD), Office of Economic Adjustment (OEA). The effort is, in part, a follow-up to a JLUS for Shaw AFB completed in 1993 and a JLUS for the Poinsett ECR completed in 2002. The current JLUS project is expected to be completed in the fall of 2016.

The Sumter-Shaw AFB JLUS can benefit both the Air Force and the surrounding region by:

- Preserving long-term land use compatibility between the installation, training range, and the surrounding communities;
- Sustaining the operational mission of the Air Force in Sumter and Sumter County while protecting the quality of life of nearby residents and businesses;
- Enhancing communication and coordination among local and regional stakeholders; and
- Integrating the growth plans of the communities in the region with Air Force plans and mission operations.

What is the purpose of the JLUS?

The purpose of the JLUS is to identify means of promoting responsible land use near both Shaw AFB and Poinsett ECR, to accommodate compatible growth and economic development in the region, to protect public safety and quality of life, and to sustain the mission of the Air Force in the Sumter and Sumter County region for the long-term. The JLUS will evaluate ways to enhance communication and coordination among local and regional stakeholders with the goal being to protect land use compatibility as both the community and the Air Force plan for the future. The JLUS does not result in changes to land use, zoning, or how a property owner may use their property, though it may identify regulatory changes for the community to consider after the JLUS is completed.

Photo courtesy of the USAF

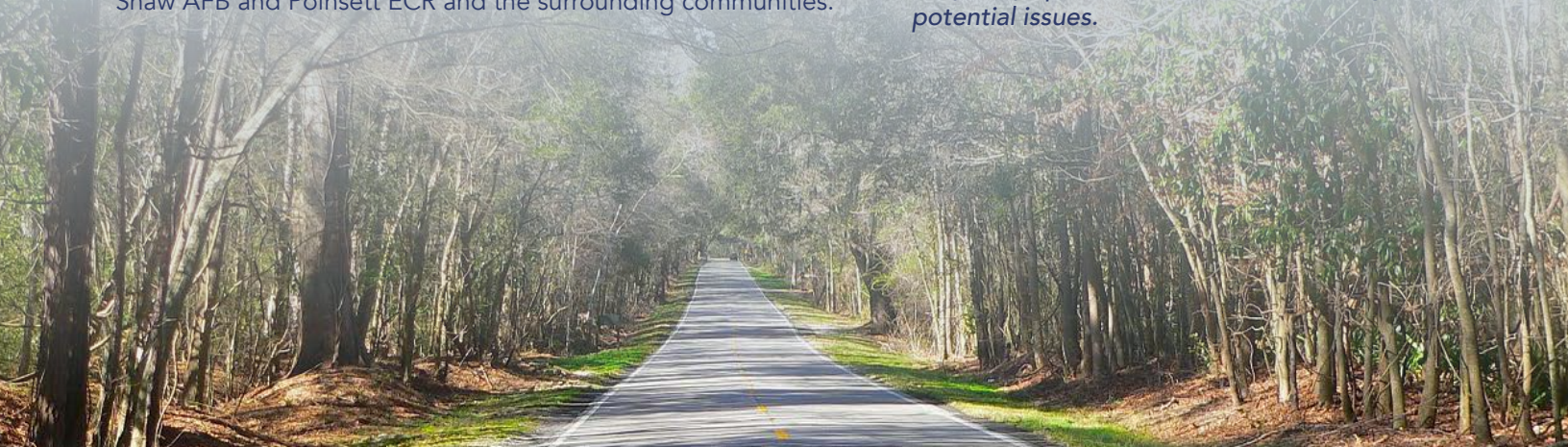


What will the JLUS address?

The Joint Land Use Study will provide:

- An assessment of existing land use conditions near both Shaw AFB and Poinsett ECR, to include potential perceived incompatible land uses, if any;
- An assessment of potential future civilian and military land use conditions, to include projected incompatible uses, if any; and
- Strategies to promote compatible land use planning around Shaw AFB and Poinsett ECR and the surrounding communities.

Compatible land use planning can be defined as the balance between the needs and interests of the community and the needs and interests of the Air Force installation and training range. In order to assess compatibility, the project team will identify current or potential encroachment issues, which may include noise, endangered species/critical habitat, safety/security, air or water quality, regional airspace management, energy development, and frequency spectrum interference, among other potential issues.



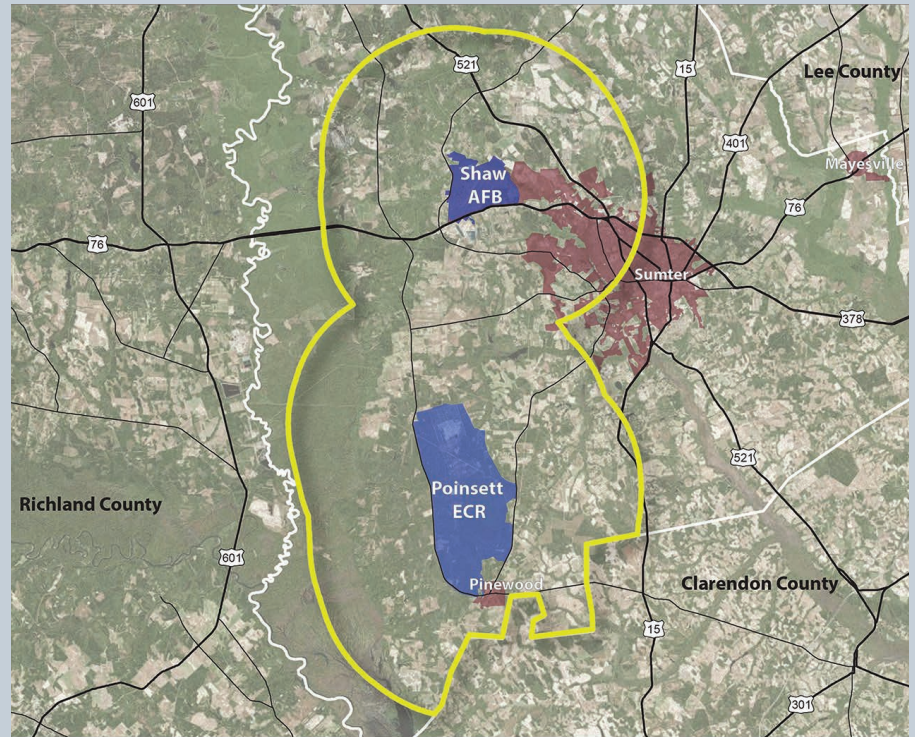
How long will the project take?

The Sumter-Shaw AFB JLUS is expected to be complete in the fall of 2016. Implementation of any actions recommended in the JLUS, should the community wish to take that step, would follow completion of this study and would follow community-wide consideration and input and action by local decision-makers.

Who will guide the development of the Sumter-Shaw AFB JLUS?

While the Sumter City-County Planning Commission is acting as the fiscal agent and project manager for the Joint Land Use Study, the development of the JLUS is guided by two steering committees with input from the general public. The **Policy Committee** is composed of elected and public administrative officials representing jurisdictions in the study area and Air Force leadership. The Policy Committee is responsible for guiding the direction of the JLUS and for managing implementation actions. The **Technical Advisory Committee**, comprised of staff members from local governmental agencies, the Air Force, and other entities, will identify and address local land use matters, provide feedback on documents prepared by the consultants, and assist the Policy Committee in the development and evaluation of implementation strategies and tools.

What lands outside of Shaw AFB and Poinsett ECR are included in the JLUS?



Shaw AFB is comprised of 3,363 acres of federally-owned land in the City of Sumter, located roughly eight miles west of downtown Sumter. Poinsett ECR is comprised of approximately 12,500 acres of federally-owned land in Sumter County, located roughly seven miles south of Shaw AFB. The yellow line in the map above indicates the approximate area to be evaluated, to one degree or another, during the study.

What are the opportunities for public input?

There are multiple opportunities for public input throughout the development of the JLUS. The project team will hold a number of public meetings to provide JLUS project updates and to seek input into the process and draft deliverables, including conducting a live-polling session during the kickoff meeting. Also, the general public will be asked to complete a public survey by December 31, 2015 in order for the JLUS steering committees and project team to gain insights into community attitudes regarding regional Air Force activities. The public may:

- 1) complete the survey online at www.sumtershaw-jlus.org,
- 2) submit a paper copy to the project team by mailing the survey to Marstel-Day, LLC, c/o Doug Allen, 33 S. 13th Street, 2nd Floor, Richmond, VA 23219, or
- 3) submit a paper copy in person to the Sumter City-County Planning Department at the office of George K. McGregor, 12 W. Liberty Street, Sumter, SC 29150.

The survey can be downloaded from www.sumtershaw-jlus.org, or will be provided upon request by contacting the project manager using the contact information below.

Finally, the public is always welcome to provide input on the Sumter-Shaw AFB JLUS by emailing us at gmcgregor@sumter-sc.com.

Photo courtesy of the USAF



For additional information, please contact:

George K. McGregor, AICP
Planning Director/Project Manager
Sumter City-County Planning Department
12 W. Liberty Street
Sumter, SC 29150
gmcgregor@sumter-sc.com

(803) 774-1606

Or visit us at: www.sumtershaw-jlus.org